



# GAT MONTHLY MEMBERSHIP PROGRESS REPORT

Results as of: 4/30/2024

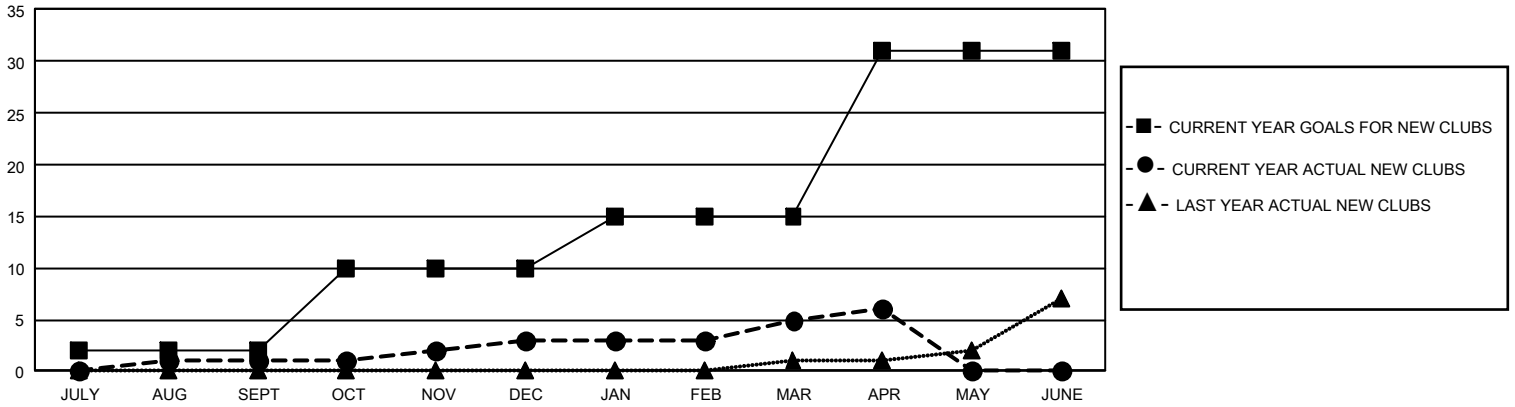
## GMT Constitutional Area 1, Group C

REPORT DOES NOT INCLUDE CLUBS IN UNDISTRICTED AREAS.

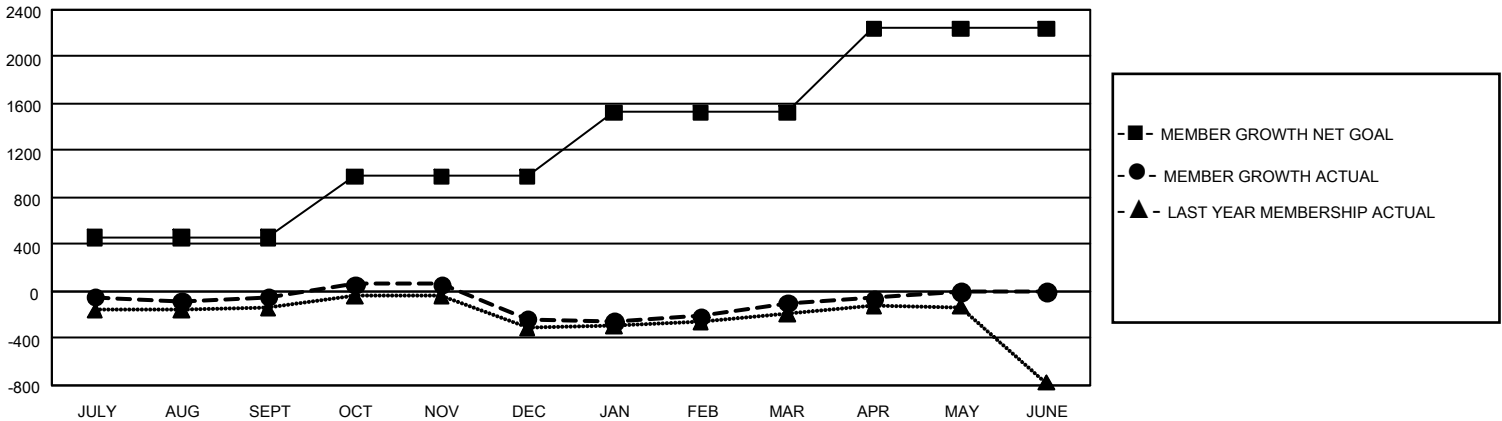
Clubs			
RESULTS FOR 2023-2024			
QUARTER	NEW CLUB GOAL	NEW CLUBS	DROPPED CLUBS
JULY/AUG/SEPT	6	1	4
OCT/NOV/DEC	24	2	3
JAN/FEB/MAR	15	2	1
APR/MAY/JUNE	48	1	1

Members			
RESULTS FOR 2023-2024			
QUARTER	MEMBER GROWTH NET GOAL	MEMBER GROWTH ACTUAL	DROPPED MEMBERS ACTUAL (including transfers)
JULY/AUG/SEPT	455	1,033	987
OCT/NOV/DEC	525	984	1,090
JAN/FEB/MAR	543	1,023	820
APR/MAY/JUNE	719	309	250

GOALS AND ACTUAL NEW CLUBS CUMULATIVE



GOALS AND ACTUAL MEMBERS CUMULATIVE



<b>DROPPED CLUBS: 9</b>	897 CLUBS OF 1,405 ADDED 1 OR MORE NEW MEMBERS	<b>GENDER DISTRIBUTION</b>	
		MALE 29,359 (68.56%) FEMALE 13,450 (31.41%) NON BINARY 2 (0.00%) PREFER NOT TO ANSWER 13 (0.03%)	
<b>DROPPED MEMBERS</b>		<a href="#">CLICK HERE FOR CUMULATIVE MEMBERSHIP DATA</a>	
DECEASED 536 CLUB CANCELLED 28 OTHER 2,579 <b>TOTAL 3,143</b>	TOTAL FAMILY UNIT MEMBERS 8,783 FAMILY MEMBERS PAYING HALF DUES 4,458		